

[Click here](#) to see this email as a PDF, or [Click here](#) to see it as a web page, if you are having problems viewing it.

# Craft Connections

January – February Newsletter 2011

Necklace by Stephanie Robinson



League of N.H. Craftsmen   
signature of excellence

## In This Issue

[President's Message - Beverly R. Wolf](#)

[Executive Director's Message -  
Susie Lowe-Stockwell](#)

[Call for Proposals](#)

[Lifetime Achievement Award Exhibition Features  
Walker T. Weed](#)

[Craft Education: It's Really Happening!](#)

[Juried Members News](#)

[Welcome to our Newly Juried Members!](#)

[From the League Retail Galleries and Councils](#)

[In Memoriam](#)

[Gallery Exhibition Schedule](#)

[Contact/League Information](#)

Click any of the headlines above  
to view the article below

## President's Message, Beverly R. Wolf, Board of Trustees

Greetings on another snowy New Hampshire day! Could be almost any day this winter, right? Despite the weather, the construction of the League's new headquarters site on South Main Street in Concord is progressing nicely. The contractor, Opechee, has enclosed the building so that the inside work can continue. Soon, our Building Committee will be visiting the site to get a feeling for our space. The committee – a diverse group of craftsmen, staff members, an architect, a space planner (also a craftsman), community members, and board members – is calling itself the HOHQ, or Handcrafting Our Headquarters, group. They have been selecting the finishes, floors, doors, and lighting for the space, with the goal of staying ahead of construction so there are no expensive change orders. They are also pricing things very carefully to get the most from our budget.

The HOHQ group is also working on how to arrange the handcrafted furniture and fixtures in the most attractive way without breaking the bank. Many of our juried members are contributing work for greatly reduced prices or as donations. These beautiful items will remind our visitors and supporters why the League is important to this state and community and why we are such a unique organization.

The staff is busily planning our move, deciding what stays, what goes and what will be needed in the new office area. Going through the tons of "stuff" at headquarters is not an easy job, but our awesome staff is putting in the extra effort, as they always do! I will never pass up an opportunity to thank these people and others involved for their time, expertise, dedication and positive energy. THANK YOU!!!

This is a truly exciting project. Check out the League's [website](#) for updates. Stay informed and get involved. We are having a wonderful time building the League's future!



Print by Matt  
Brown

[Return to Top](#)

## Executive Director's Message, Susie Lowe-Stockwell

Plans for our summer move into the new facility are in full swing. We continue to work on raising funds and positioning ourselves for the public announcement of the capital campaign. The capital campaign consultants are building the committees and recruiting volunteers who will be instrumental to the success of the project. You will be hearing more about this soon as we complete this leg of the work.

Under the leadership of **Catherine Green**, standards and education manager at the League, the Curriculum Committee is busy developing education programs for the general public, beginning craftsmen, as well as programs for master level craftsmen. Our new exhibition gallery will feature the work of League juried members in a show called "*Setting the Standard: Work of the Jurors – Continuing the Tradition*" and will open July 8, if our move goes as planned. For the first time in the League's history, the best pieces of our Permanent Collection will be on display in one room. The Library and Archives room will be an inviting space to research, read, search the Internet, and interact with craftspeople. Classroom spaces on the first floor and the lower level will be used for wet and dry techniques in several mediums. The multi-purpose room will facilitate craft business seminars, lectures, meetings, and other large gatherings. And our staff will have efficient and appropriate offices in which to work. We are all very excited and looking forward to showing you the final plans soon.

More good news! The League retail galleries had a wonderful holiday season with gross sales exceeding 2009 sales by nearly 24% in November and over 14% in December. This is another indication of the recovering economy and that customers are choosing quality, handmade goods.

Along with working on the 78th Annual Craftsmen's Fair, scheduled for August 6 – 14, the staff, assisted by some of our juried members, will be representing the League at the following events: the New York Times Travel Show at the Javits Convention Center in New York City on February 25-27; NE Products Show in Portland, ME on March 12-14; Boston Gift Show on March 26; and the Made in NH Expo in Manchester on April 1-3. I plan to attend part of the Governor's Conference on Tourism, May 5-6, and the CODA (Craft Organizations Development Association) conference in Portland, ME on June 8-11. We will hold a grand opening celebration in our new facility sometime in October and the date for the 2nd Annual Auction- *Get Your Craft On* is scheduled for November 11. As you can see, there's a lot going on, and more to come.



*Booth from New York Times Travel Show*

[Return to Top](#)

## Call for Proposals

The HOHQ (Handcrafting Our Headquarters) Committee is seeking proposals of furniture for the new library in our new facility. The vision of the new library includes comfortable handcrafted chairs/rocking chairs and a handcrafted table with chairs. Please contact **Catherine Green** at [cgreen@nhcrafts.org](mailto:cgreen@nhcrafts.org) or **603-224-3375**, if you would like to participate in the project.

[Return to Top](#)

## Lifetime Achievement Award Exhibition Features Walker T. Weed

**Walker T. Weed**, juried member since 1948, was recognized as the ninth recipient of the League's Lifetime Achievement Award during the 2010 Annual Craftsmen's Fair Preview Party. An exhibition of his work will be on display in our Gallery 205 from April 8 through June 22, 2011 – the final show in our current headquarters. **Susie Lowe-Stockwell** presented Walker with this prestigious award along with an explanation for his selection. The Lifetime Achievement Award is given by the League's Standards Committee to a juried craftsmen who has attained high achievement in his or her medium, has demonstrated past or present commitment to the League, is well recognized either at a local, state or national level and has nurtured or mentored other craftspeople. It is not meant to be given on a regular basis. Walker was selected because of his extraordinary talent and commitment to his



craft and the League. He is nationally known as a leader in American contemporary furniture making. Self-taught, he has influenced generations as a teacher and as an artist, having served as the director of the Dartmouth College crafts program from 1964-81. He has earned the award of distinction from the furniture society, given to deeply respected educators and outstanding furniture makers. To quote Walker: "Becoming skillful in a craft is a great source of joy. Making useful things with one's hands gives you a great sense of accomplishment and also a basis for judging the beauty and a quality of the utilitarian objects with which we live. Even the simplest things that have been made with love contribute much to our happiness and understanding." Since 1999, the League has presented Lifetime Achievement Awards to **Gerry Williams, Elizabeth Nutt, Mary Osgood, Gordon Keeler, Vivika & Otto Heino** and **Mary & Edward Scheier**.



[Return to Top](#)

## Craft Education: It's Really Happening!

Plans are well underway to begin a Craft Education Program in the new headquarters! The Curriculum Committee is compiling equipment and tool needs and beginning to outline a program. Several juried members have already expressed an interest in teaching and there are many opportunities.

Class offering possibilities include but are not limited to: fiber/dyeing/surface design/shibori/batik, fiber/felting, paper making, paste paper making, book binding, baskets, floor cloths, leather, polymer clay, printmaking, bead weaving, fiber/quilting, fiber/rug hooking, fiber/rug braiding, fiber/ knitting/crocheting, fiber/weaving, drawing and design, calligraphy, metalsmithing (jewelry, forging, fabrication)/sculptural, precious metal clay, glass (warm, dichroic, slumped, kiln formed, lamp worked), enameling, cloisonné, stained glass, and wood carving.

Please contact Catherine Green at [cgreen@nhcrafts.org](mailto:cgreen@nhcrafts.org), or **603-224-3375** if you wish to become involved.

[Return to Top](#)

## Juried Member News

**Sandra McCaw** has been nominated for the third year in a row (she won last year), for a *NICHE* Award. She has been nominated in two categories: Polymer Clay and Fashion Jewelry. Sandra is a featured artist in the Lark Publications book titled *Masters: Polymer Clay*, which is due out in March.

**Rhonda Besaw's** beadwork is being featured at the Institute for American Indian Studies in Washington, CT for the entire month of February. On display are many of her Wabanaki style beaded purses, beaded regalia and beaded jewelry items. The exhibition runs through February 27. There is no charge for this exhibition and some of her beaded items are for sale. The IAIS web site address is [www.birdstone.org](http://www.birdstone.org).

**Mona Adisa Brooks** opened a fine art gallery in Peterborough, NH called THE WINDOW GALLERY. The gallery features Mona's work on an ongoing basis, with group exhibitions of New Hampshire artists. The Gallery is on the corner of Main and Grove Streets in Peterborough - 603-924-9862. Hours are Thursday - Saturday, 11am-3 pm.



*Earrings by  
Sandra McCaw*



Fabric Piece by  
Wen Redmond

Fiber artist **Wen Redmond** and mixed media sculptor **Deb Homer O'Leary** are having a collaborative mixed media gallery showing through February 25 at the Robert Lincoln Levy Gallery, 136 State Street in Portsmouth, NH.

**Wen Redmond's** piece *Leaping Point* has been accepted into *Quilt National 11* after trying for over 15 years. Persistence pays! The piece was purchased before the show opens by the founders of the exhibit! And Wen is delighted to announce she was accepted into *Craft Boston*, a fine arts and crafts show in Boston.

**Sarah Fortin** had several pieces of her work in juried exhibits throughout the country in 2010. Her work was in the *Handweavers' Guild of America (HGA) Convergence*, a biannual conference of fiber enthusiasts from around the world, in Albuquerque, NM in July. Three of her garments were accepted into the *Fashion Show and Exhibit, Walk in Beauty*. She received 1st, 2nd, 3rd place and the Interweave Press Award and the *Rocky Mountain Weavers Guild* award at the *Northern Colorado Weavers Guild 36th Annual Juried Exhibit, Fiber Celebration 2010*, Greeley CO and 2nd Place Accessories for Spring Scarf, professional category at the Blue Ridge Fiber Show 2010. Sarah will be teaching at three conferences this year: New England Weavers Seminar, Smith College in July, Mid-Atlantic Fiber Conference, Gettysburg College in July and the Eastern Great Lakes Fiber Conference in Chautauqua, NY in October, and she will also be teaching several workshops at guilds around the country.

[Return to Top](#)

## Welcome to our Newly Juried Members!

### Clay:

**Veronica Delay** and **Jeff Pentland**, Woodstock, VT. Veronica and Jeff work in earthenware and stoneware making primarily functional pottery including bowls, mugs, pitchers, plates, platters, and other shapes.

**Stephanie Young**, Plaistow, NH. Stephanie works in porcelain, creating wheel thrown forms that are intricately hand carved. Each piece is unique.

### Fiber/Felting:

**Carolyn Wright**, South Sutton, NH. Carolyn is a needle felter, primarily and a wet felter. Her work is derived from nature and consists of animals and faces.

**Miriam Carter**, Dublin, NH. Miriam is a fourth generation feltmaker, specializing in hats, scarves, vests and coats, returning to the League as a juried member.

[Return to Top](#)

## From the League Retail Galleries and Councils:

### Celebrating Love & Chocolate in Littleton

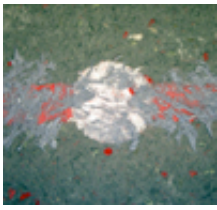
As part of the town's *3rd Annual Festival of Love & Chocolate* on February 12, the Littleton Retail Gallery featured juried member **Jim Lambert**, who created custom-made hearts & hand valentines. The **Littleton Studio School** held a "Just Desserts" Fundraiser, where donors could enjoy chocolate delicacies, including truffles, mousse, cookies, and more.

[Return to Top](#)



Piece by Jim Lambert

**Annual Fund for Fiscal Year 2011 closes March 31, 2011** – please do what you can to help us make our goal!  
Save a stamp and donate online at [www.nhcrafts.org](http://www.nhcrafts.org)



## In Memoriam

**Ray Bliss Rich**, juried craftsman, passed away December 27, 2010. Ray was the Chair of our Gallery Committee and will be greatly missed for his dedication, beautiful mixed media/paper images, and love of the League.

[Return to Top](#)

*Piece by Ray  
Bliss Rich*

## Gallery Exhibition Schedule

**Setting the Standard – Work of the Jurors-Continuing the Tradition:** July 8 – September 21

**Music From Our Hands:** October 14 – December 14

[Return to Top](#)

## Contact/League Information

If you would like to contact the League, [click here](#)

To see who is on the League's Board of Trustees, [click here](#)

To unsubscribe, please send an e-mail to: [slindstrom@nhcrafts.org](mailto:slindstrom@nhcrafts.org) asking to be removed from the League's newsletter list.

[Return to Top](#)



**NEW HAMPSHIRE  
CHARITABLE FOUNDATION**

Funding for the League of NH Craftsmen was provided in part by the New Hampshire Charitable Foundation



Supported in part by a grant from the New Hampshire State Council on the Arts and the National Endowment for the Arts.



STATE OF NEW HAMPSHIRE  
**American Recovery  
and Reinvestment Act**



Positions in our organization are supported by a grant from the New Hampshire State Council on the Arts & the National Endowment for the Arts through the American Recovery and Reinvestment Act.