

[Click here](#) to see this email as a PDF, or [Click here](#) to see it as a web page, if you are having problems viewing it.

Craft Connections

April – May Newsletter 2010

In This Issue

From the Executive Director
New Retail Gallery to Open in Nashua
Annual Meeting – Update
Special Auction this November
Planning for 2010 NH Open Doors is Underway
Craft on Display in Senator Shaheen's DC Office
Insurance Programs for Juried Members
Walker Weed Receives League of NH Craftsmen Lifetime Achievement Award
Yankee Magazine Editor's Choice
2010 Annual Ornament Selected
Member News
Blackstone Volunteer Recognition Award Nominations due July 1
2010 Traveling Exhibition—Intuitive Botany Gallery 205 Exhibitions
Contact the League

Click any of the headlines above to view the article below

Necklace by Paulette Wenger

League of NH Craftsmen 
signature of excellence

From the Executive Director

The League works on a fiscal calendar year from April 1 - March 31, creating an interesting way to think about our "year" and all that goes on in this organization. We will discuss this at our annual meeting on May 20, so please plan to attend. Headquarters has been very busy this year, particularly because of the planning, fundraising, and countless meetings for our new headquarters on South Main Street in downtown Concord, opposite the Capitol Center for the Arts. Developer Steve Duprey will provide an overview during our annual meeting. He expects demolition of the current structure by early June with construction beginning immediately. Should all plans stay on track, the League would take occupancy in its new headquarters by late spring of 2011, or early fall. We are having success in selling the \$1,125,000 in CDFR tax credits which will net the League \$900,000 toward its purchase of the space. Businesses of any size that pay a BET, BPT and/or IPT can purchase tax credits at about 15 cents on the dollar, which is a wonderful opportunity to pay their tax liability and get credit on a contribution to a nonprofit.

The primary focus of our activities continues to be maintaining programs that support the work of our craftspeople. As the economy is showing evidence of recovery, we've seen the League's retail galleries increase sales and activity in this last quarter. This is very positive news. The opening of a new League retail gallery in Nashua on May 28 will bring a League presence to the south, providing additional exposure for our juried members. **Ruth Boland**, owner and manager, is very excited about operating a League retail gallery and providing her weaving and basketry classes with demonstrations and workshops taught by League juried members in a variety of mediums. Thank you to those juried members who have filled out their Bio Card information. This information is used by the retail galleries to educate customers about you and your work, and it also appears on the League's website. If you haven't created your Bio Card, please contact **Sharon Lindstrom** at 603-224-3375 or slindstrom@nhcrafts.org and she will help you.



Glass Vase by Robert Burch

I also would like to welcome **Stacey Tarbell**, who joined the League staff on May 10 as a part-time clerical assistant. Stacey is helping **Catherine Green**, standards and education manager, and **Terri Wiltse**, operations manager.

[Return to Top](#)

New Retail Gallery to Open in Nashua

The League's Board of Trustees approved a proposal from **Ruth Boland**, juried member of the League in Basketry, to operate a League Retail Gallery at 98 Main Street in Nashua, NH. We are very excited to have a League retail gallery in the southern region of New Hampshire. Juried into the League in 2001, Ruth has been making baskets since 1991. An accomplished instructor and basket weaver, Ruth moved her business, Ruth Boland Basketry, to the Nashua location on March 1, 2010. She is already teaching classes and plans to offer education programs in other mediums presented by juried League instructors. Juried members are encouraged to talk with Ruth about consigning in her Gallery. You can reach her by email (preferred), rboland428@aol.com or by phone, 603-595-8233.



Basket by Ruth Boland

The Grand Opening of the Nashua Retail Gallery will occur on Friday, May 28 and Saturday, May 29, with refreshments and demonstrations. The demonstration schedule is: Friday, 5 – 8 pm, basketry by **Lynn Goldberg**, Saturday, from 11 am – 2 pm art clay jewelry by **Carol Babineau**, 2- 5 pm metal and enamel jewelry by **Marcie Rae** and from 5-8 pm beading by **Deb Fairchild** and rug hooking by **Victor Joos**. Watch for your email and mail for more details!

[Return to Top](#)



Newly elected members of the Board of Trustees Maria Del Rio and James Kennedy

Annual Meeting – Update

Nearly 50 people attended the annual meeting at the Mill Brook Gallery & Sculpture Garden on May 20. The meeting featured a review of the year's activities including an enthusiastic update from **Steve Duprey**, developer of the building that will house the League's new headquarters. Newly elected members of the Board of Trustees were introduced. They are **Maria Del Rio**, who will serve as treasurer, and new member-at-large **James Kennedy**. Outgoing members of the Board — Nancy Wyatt, Treasurer and **Edith Grodin** — were thanked for their loyalty and commitment. Edith, whose involvement with the League spans nearly 30 years, was honored with a gift of an **Adele Sanborn** handmade book, which was signed by all in attendance.



Edith Grodin was honored for her 30 years of service to the League

[Return to Top](#)

Special Auction this November

On November 12, 2010, the League will hold its first annual *Get Your Craft On: THE Auction for the League of NH Craftsmen*. Leigh Keno, president of Keno Auctions and an appraiser on PBS' *Antiques Road Show*, will host the event, which will feature fine craft from the League's master craftspeople, as well as donations from restaurants, wineries, retail shops and more. The event will also include a NH Growers Dinner, with fresh, locally grown poultry, fruit, vegetables and wines. Plan to join us for all the fun!

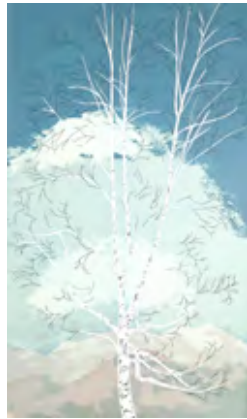
[Return to Top](#)

Planning for 2010 NH Open Doors is Underway

This statewide shopping and touring event is scheduled for the weekend of November 6-7. Participants will soon be able to sign-up and edit their listings online. NH Made and the League of NH Craftsmen are writing a Joint Promotional Program grant that will allow more

in-state and out-of-state advertising for the event.

[Return to Top](#)



Work on Display in Senator Shaheen's Office

Five items from the League's **Permanent Collection** will be on display in Senator Jeanne Shaheen's office in the Hart Senate Office Building in Washington DC for a two-year renewable period, beginning May 2010. The items include a Woven Wall Hanging by **Elizabeth Nordgren**; the League's 50th Anniversary Poster by **Lance Hidy**; a Limited Edition Colored Etching for the 60th Annual Craftsmen's Fair by **Christopher Hill Morse**; a Limited Edition Serigraph, "A Summer's Day at the Craftsmen's Fair," by **William C. Mitchell**, commemorating the League's 75th Anniversary; and a Limited Edition Serigraph, "Sylvan Dancer," (Left) by

Catherine Green.

Several Limited Edition Woodblock Prints by League printmaker, **Matthew Brown**, will also be on display in the Senator's office for a two-year renewable period beginning May 2010.

[Return to Top](#)



(LtoR) Senator Shaheen, Susie Lowe-Stockwell, Inge Eddy, and Catherine Green at League headquarters

Insurance Programs for Juried Members

Davis & Towle Insurance Group offers the group insurance programs for juried League members including:

- Independent Contractor Occupational Accident Insurance
- Limited Medical Benefit Insurance
- Personal Insurance with Group Discount
- Commercial (Business) Insurance
- Travel Insurance

To learn more contact Linda Quinn at 603-225-6611 x 170 or lindaquinn@davistowle.com

[Return to Top](#)

Walker Weed Receives League of NH Craftsmen Lifetime Achievement Award

Renowned woodworker **Walker Weed** will receive the League's Lifetime Achievement Award. Walker joined the League in 1949, in part with the encouragement of **David Campbell**, the League's Director, along with fellow craftsmen **Gerry Williams**, **Edwin and Mary Scheier**, and **Gordon Keeler**. In 1955, through his involvement and friendship with David Campbell, Walker became a Craftsmen Trustee of the American Craftsmen's Educational Council. In 1957, he was a panelist at a seminar on woodworking, American Craftsmen's Council First Annual Conference in Asilomar, CA.

In 1962 he was a woodworking instructor at the Hopkins Center at Dartmouth and two years later, became the center's director of student workshops. He served in that capacity from 1964 until 1981, when he retired. The Hopkins Center at the Dartmouth College Museum & Galleries held a retrospective of Walker's work from August 7 through September 27, 1981.



Walker Weed

"Becoming skillful in a craft is a great source of joy. Making useful things with one's hands gives you a great sense of accomplishment and also a basis for judging the beauty and quality of the utilitarian objects with which we live. Even the simplest things that have been made with love contribute much to our happiness and understanding," wrote Walker in a 2008 article.

Walker served as a Council member of the League of NH Craftsmen from 1963-1965 and also served as a League wood juror. He has been included in the League's documentary film. He was elected Fellow of the American Craft Council in 1992 and in 2008 received the Award of Distinction from the Furniture Society, a lifetime achievement award given to "deeply respected educators in addition to being outstanding makers."

Walker's work will be featured in the *Living With Craft* exhibition at the Annual Craftsmen's Fair this August along with an awards presentation.

[Return to Top](#)



Yankee Magazine Editors' Choice

The League of NH Craftsmen has been recognized as a 2010 Editors' Choice in *Yankee Magazine's Travel Guide to New England*, on newsstands now. This designation is awarded by *Yankee's* editors and contributors, who name select restaurants, lodgings, and attractions in New England to the exclusive list.

[Return to Top](#)

2010 Annual Ornament Selected

Peggy Roth's handmade miniature mobile, *Two Turtle Doves*, has been selected as the 2010 Annual Ornament. The three-dimensional wood mobile features two authentic cream-colored turtle doves with moveable wings, facing each other in a nest and surrounded by an arbor of green leaves and little red berries. This is Peggy's second Annual Ornament for the League. *Two Turtle Doves* is the sequel to her 2007 Annual Ornament, *A Partridge in a Pear Tree*.



[Return to Top](#)

Member News

Congratulations to **David Lamb** who has been named *N.H. Artist Laureate* and will serve in this honorary position through March 2012. David was nominated by Governor John Lynch and was confirmed by the Executive Council.

Cherie DeAugustinis received the Best in Show/Jurors Award at AVA Gallery's Juried Summer Exhibition (2009).

Wen Redmond was featured on [The Textile Blog](#) and was pleased that the author showed sensitivity and insight into her work.

A set of paired quilts created by **Jane Frenke** will be hanging in the U.S. Embassy in Saudi Arabia for three years as part of the U.S. Department of State's Art in Embassies program.

The *Exeter Newsletter* ran an [article](#) last Fall about **Duane Martin** and his intarsia making. On March 11, Duane spoke about intarsia projects to the International Friendship Group, an organization made up largely by University of New Hampshire-Durham professors and students at UNH Durham. He has also been participating in elementary school arts programs, working with Swasey Elementary School (Brentwood, NH) students in April, and fixing musical instruments for Mast Way Elementary School in Lee, NH in the near future. His *Nubble Lighthouse Intarsia* is a finalist in *Scroll Saw Magazine's* Best Woodworking Project contest and he will be doing an article for this publication about on his work with Newfields Elementary School sometime this year.

Mark White's jewelry has been accepted by two galleries outside of New Hampshire that are well known in the craft arena: FreeHand in Los Angeles and Red Sky Gallery in Charlotte, NC. The owner of FreeHand produced the show "Craft In America" which aired on PBS in 2009. Mark is very excited to be working with both of them in addition to the wonderful support that the League has given him.

Congratulations to **Tom McGurrin**, named a 2010 NICHE Awards Winner for his jewelry piece entitled *Bamboo Pendant* during the Buyers Market of American Craft in Philadelphia, PA in February.

Christopher Morse, Experience the Arts Director at Mascoma Valley Regional High School coordinated arts programs and fifteen field trips for the district's four schools including residencies with several League juried members, including **Hans Schepker** and **Joseph DeRobertis**.

In Memoriam

Hazel Weed, a handspinner and weaver, passed away at the age of 86 on January 7. She was married to woodworker **Walker Weed** for 67 years.

Welcome to Our Newest Juried Members

Clay

Jette Nielsen, Newbury, VT, non-functional, decorative stand-alone vases; Raku, Pit Firings, and Saggar Firings. Jette also makes ceramic torsos.

Cheryl Haynes, Sanbornton, NH, hand built with slab, favoring organic forms, strong lines, and a textured surface.

Michele Hastings, Northwood, NH, functional pottery of stoneware and porcelain; a vast majority being tableware with designs impressed into the clay using a handmade stamp.

Rob Cartelli, East Dummerston, VT, wheel-thrown functional tableware, strongly influenced by historical pottery and Modernism.

Rug Hooking

Julie Robinson, Loudon, NH, hooked rugs inspired by and designed with wildlife themes.

Glass

Aaron Slater, Londonderry, NH, flameworked and lampworked, primarily spheres.

Peter VanderLaan and Mary Beth Bliss, Chocorua, NH, blown glass: patterned dichroic cased in clear glass and blown in vessels.

There will be a Mixed Media jury session on June 8.

Fiber

Tarja Cockell, North Andover, MA, mixed fiber mediums creating contemporary fiber art pieces.

Vicki Hu Poirier, Center Barnstable, NH, textile artist using a broad range of techniques by hand and on the sewing machine.

Non-Metal Jewelry

Vicki Hu Poirier, Center Barnstable, NH, jewelry constructed mainly with needle and thread called bead embroidery.

Wood

Cynthia Ellis, Dover, NH, functional woodturning creating tools and accessories for needlework artists, writers, and others.

K. Will Kautz, Hartland, VT, sculptor and wood carver, inspired by early American folk art.

Tim McEachern, Keene, NH, realistic bird carving from tupelo wood.

Correction: **Dawn Russell** is in Bellows Falls, VT.

[Return to Top](#)

Blackstone Volunteer Recognition Award Nominations due July 1

One of the most important honors presented by the League, the Blackstone Volunteer Recognition Award recognizes the selfless efforts of a League volunteer. Each year, Local Council Presidents and the League membership nominate volunteers who have given in extraordinary ways to support craftspeople and craft education. The final selection is made by the Executive Committee of the Board of Trustees.

[Click here for a nomination form.](#) The form is also available to Juried Members from our website at nhcrafts.org – click on Juried Members and Log-in. Contact Sharon Lindstrom, database and computer manager at 603-224-3375 or slindstrom@nhcrafts.org to obtain your user name and password.

[Return to Top](#)