

# Craft Connections

HAPPY 75<sup>th</sup> BIRTHDAY ANNUAL CRAFTSMEN'S FAIR!

## 75 Years and Still Going Strong



### INSIDE

President's Message .....2  
 From the Executive Director

75 Gifts for the 75th .....3

North County Studio Workshops  
 Member News .....4

Fair Highlights .....6

Fair Educational Program  
 Schedule .....8

Retail Gallery News .....10

Library Additions  
 Craft Scholarship Awarded ....11

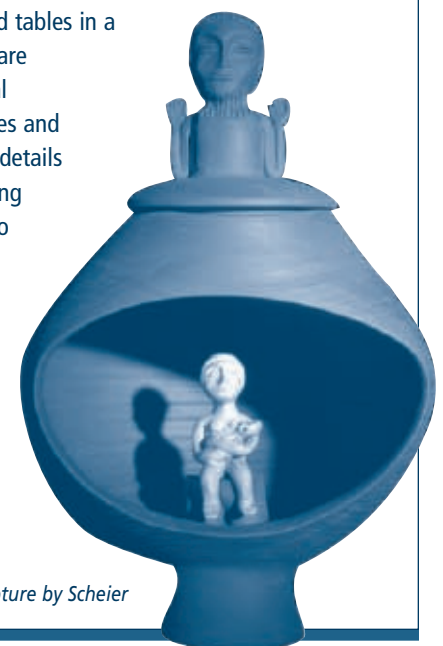
**S**eventy five years is a long time for an event to sustain itself. But then, the Annual Craftsmen's Fair isn't an ordinary event. It began in 1933, when a barn in Crawford Notch was converted into a showcase for fine craft. The sales that first year totaled \$2,698, which was a success in those days. Since that time, the Fair has traveled to a variety of locations throughout New Hampshire. In 1964, the Fair moved to the Mount Sunapee Resort in Newbury and, due to its tremendous growth there, has remained to this day. Today, it is a nationally recognized event that attracts craft buyers and craft enthusiasts from all over the country. It is listed in *1000 Places to See Before You Die*, a best-seller by travel author Patricia Schultz. And when you search for "craftsmen's fair" on Google, the League of NH Craftsmen's Fair is at the top of the list.

The Fair strives to educate people of all ages about the techniques and craftsmanship used in the creation of fine craft. This year, children and adults will have the opportunity to see 18 demonstrations, participate in 20 workshops, visit five exhibitions and take daily tours with master craftspeople.

Some of the finest craftsmen in the country have demonstrated and displayed their work at the Fair. There are far too many to list but there are some who have gone on to international acclaim and left their mark, such as blacksmith **Joe Tucker**, enamellist **Joe Trippetti**, glass blower **Dudley Giberson**, potter **Jack O'Leary, Otto and Vivika Heino**, and **Ed and Mary Scheier**. This year will be the 57th time **Gordon Keeler**, juried wood turner and leather worker, has had a booth.

The volunteers on the Fair Committee and the staff at League headquarters work all year to prepare the Fair, three weeks to set it up, and three days to tear it down. It has gone from card tables in a barn to juried booths of gallery quality. The fairgrounds are weatherproof and safe due to the underground electrical infrastructure and technical operations. Business practices and policies for all participants ensure that all management details run smoothly. This year, we have instituted online ticketing so fairgoers can buy tickets in advance on the internet to ensure quick entry into the Fair. The Fair has come a long way.

The Fair ("Sunapee Fair" as many call it) is a magical event, bringing us all together, much like an annual family reunion, in an atmosphere of pride – everyone showing off their latest work – and anticipation – everyone hoping to sell it all. How fortunate we are to experience the 75th Annual Craftsmen's Fair. Happy Birthday!! ■



Sculpture by Scheier

**League of NH Craftmen**  
205 North Main Street, Concord, NH 03301  
T: 603-224-3375 F: 603-225-8452  
E-Mail: nhleague@nhcrafts.org  
www.nhcrafts.org

#### BOARD OF TRUSTEES

**Beverly Wolf, President**  
Arts Advocate, Newbury, NH

**Adele Sanborn, Vice President**  
Craftsperson, Webster, NH

**Nancy Wyatt, Treasurer**  
Finance Professional, Concord, NH

**Cynthia Hunt, Secretary**  
Grant Writer, Concord, NH

**Parker Potter, Immediate Past President**  
Law Clerk, Contoocook, NH

**Charles P. Bauer**  
Attorney, Concord, NH

**Jonathan Chorlian**  
Real Estate Professional, Concord, NH

**Ingeborg Eddy**  
Retired, Craft Retail Sales, Hopkinton, NH

**Edith Grodin**  
Arts Advocate, Jaffrey, NH

**Donna Hiramura, Co-Chair of Fair Committee,**  
Craftsperson, Cavendish, VT

**George Saridakis**  
Chair of Standards Committee  
Craftsperson, Groton, MA

**Carol Shelton**  
Arts Advocate, Hopkinton, NH

**Pamela Tarbell**  
Artist, Gallery Owner, Concord, NH

**Ron Tornow, Chair of JMF**  
Craftsperson, Merrimack, NH

**Jeff Wheeler**  
Business Professional, Littleton, NH

#### LEAGUE STAFF

**Susie Lowe-Stockwell, Executive Director**  
slowstoc@nhcrafts.org

**Joyce Andrews, Office Manager**  
jandrews@nhcrafts.org

**Prudence Gagne, Finance Director**  
pgagne@nhcrafts.org

**Catherine Green,**  
Standards & Education Manager  
cgreen@nhcrafts.org

**Sharon Lindstrom,**  
Database and Computer Manager  
slindstrom@nhcrafts.org

**Shelley Roy, Assistant to the Executive Director**  
sroy@nhcrafts.org

**Terri Wiltse, Operations Manager**  
twiltse@nhcrafts.org

**Corinne Kennett, Clerical Assistant**  
ckennett@nhcrafts.org

**Pam Sullivan, Sullivan Creative**  
Communications Consultant  
pam@sullivancreative.com

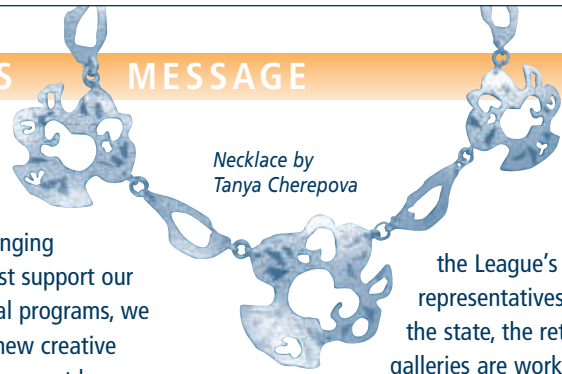
**Marilyn Ewer, MKE Enterprises**  
Development Consultant  
m.ewer@comcast.net

## PRESIDENT'S MESSAGE

**W**e are working today in a challenging environment. In order to best support our craftspeople and educational programs, we must be more receptive to new creative marketing ideas. Our thinking must be positive and adventurous so that we promote sales and, at the same time, get our meaningful message out to the public.

Many people in our community don't know all that the League does—how we support our craftspeople, encourage teaching of fine craft, and help young people to get started in a craft-related field. Most know about the Fair and that is wonderful, but they have no clue about what else makes us tick. We are working hard to enlighten our neighbors and friends about our bigger picture.

Recently, there was a very positive meeting among our councils, retail managers, staff, craftspeople, and board members. As



Necklace by  
Tanya Cherepova

the League's representatives around the state, the retail galleries are working hard to support the craftspeople and the League as a whole. Among other things, we discussed new ways to use the internet as a means to help educate the public. It's an exciting topic that adds new dimension to our outreach program.

The next important opportunity to convey our message will be at our 75th Craftsman's Fair. I urge everyone to attend, bring friends, and visit our demonstration tents as well as the sales tents. Maybe you will learn something new! I look forward to seeing you there. ■

**Bev Wolf**  
*President, League of NH Craftmen*

## FROM THE EXECUTIVE DIRECTOR

It's clear that "change" is a popular word in the news these days. Leaving politics aside, there are a few changes that we are putting into place at League headquarters that will move us closer to working "green" *but we need your help.* I am sure you are not surprised to hear that the League uses a lot of paper to communicate information to our membership. Thanks to the interactive technology in our new website, our documents will be available to juried members electronically. Right now, anyone who wants to apply for juried member status can go to our website and complete an application online or download and print an application form. We have implemented this technology for all of our programs through a Members section of the website that is accessible by password. To access the Juried Members section, please contact **Sharon Lindstrom** at League headquarters at slindstrom@nhcrafts.org, or 603-224-3375 for your user name and password.

Currently we have email addresses for 491, or 70% of our juried membership, and that number keeps growing. The League can save approximately \$5,000 in paper, postage and printing costs by having our members apply online for the Fair, Gallery 205 exhibitions, participation in the NH Open Doors event and by sending online reminders to pay dues. We will make the 2009 Marketing Packet available on our website in mid-October. For those members with email addresses, we will send email reminders. For those without internet capability, we will send a postcard notice to ask if you would like to receive a package in the mail. The League will be able to transfer these cost savings onto education programs for the public and members, which will enhance understanding of the work of our craftspeople. Imagine, we're 76 years old and going green-er! ■

**Susie Lowe-Stockwell**  
*Executive Director, League of NH Craftmen*

# 75 Gifts for the League's 75th Anniversary

We have exceeded our goal of acquiring 75 gifts for the League's Permanent Collection! Due to the remarkable generosity of craft collectors and League craftsmen, 82 donations of fine craft have been added to our Permanent Collection. The Advisory Committee, including **Wesley Balla**, director of exhibitions at the New Hampshire Historical Society; **Inge Eddy**, member of the Board and Gallery 205 committee; **Edith Grodin**, Board member and craft collector; **Andrew Spahr**, chief curator at the Currier Museum; **Nora and Norman Stevens**, League supporting members, award sponsors and craft collectors; **David Tardif**; legal consultant and craft collector; and **Gerry Williams**, juried member emeritus and Lifetime Achievement Award recipient, met in May to consider suggested donations.

Currently on display in Gallery 205 are many of the newly acquired pieces in an exhibition entitled, *The Permanent Collection: 75 Pieces for 75 Years*. The exhibition will close August 13, 2008.



(L) Susie Lowe-Stockwell thanks Nora and Norman Stevens for their donations of several pieces to the Permanent Collection during remarks at the opening reception of *The Permanent Collection: 75 Pieces for 75 Years* on May 9.

Gallery hours are Monday-Friday, 8:30 a.m. - 4:30 p.m. and Saturdays, 10:00 a.m. - 4:00 p.m.

The Advisory Committee would like to hear from collectors and craftspeople who are interested in donating items to the Permanent Collection, making a financial contribution to support purchases for the collection, or providing names of collectors and owners of important pieces whom they might approach. To request a packet of information, ask questions, or make comments and suggestions, please contact League Standards and Education Manager **Catherine Green** at 603-224-3375 or [cgreen@nhcrafts.org](mailto:cgreen@nhcrafts.org). ■

## NEW FEATURES FOR MEMBERS ON LEAGUE WEBSITE

As you may know, the League of NH Craftsmen has a new website and the League staff has been regularly updating it with new information and events. Now there is a new section just for juried members. This new section will enable you to sign up online for participation in Annual Craftsmen's Fair activities, NH Open Doors (former Open Studio Tour), Gallery 205 exhibitions, Annual Ornament selection, and the Members' Juried Exhibition. There are also forms to apply for a League grant or scholarship, or nominate a craftsperson one of the League's Blackstone or Lifetime Achievement awards.

You can access this section of the site through a password-protection log-in box on the home page or on the Juried Members page. To get your username and password, please contact **Sharon Lindstrom** at League headquarters at [sindstrom@nhcrafts.org](mailto:sindstrom@nhcrafts.org), or 603-224-3375.

We welcome your feedback and suggestions for this section of the site.

## 2008 Annual Meeting Highlights

The Annual Meeting was held on May 29 at the Kimball-Jenkins Carriage House in Concord. Over 50 juried and supporting members attended the meeting and enjoyed a barbecue provided by the Board of Trustees, the Juried Members Forum (JMF) Committee, and LNHC staff members. Ending his term as the JMF chair, **Andy Hampton** thanked the Board and League staff, and announced that **Ron Tornow** was elected to be the new JMF chair to sit on the Board of Trustees. **Bev Wolf**, president of the Board, discussed the Board's continued quest to upgrade League headquarters and the disappointment of the unrealized opportunity with Kimball-Jenkins. She underscored the importance of having everyone work together as the League moves forward with its capital campaign.

Executive Director **Susie Lowe-Stockwell** thanked Bev and the Board for their work and support and recognized her staff for their commitment to the League. She outlined the past year's events and reported that she, **Catherine Green**, **Terri Wiltse**, and **Pam Sullivan** represented the League at 18 different functions, which has helped expand the League's visibility. She also reported that our documentary, *A LEAGUE OF OUR OWN: New Hampshire and the American Craft Movement*, continues to be a strong educational tool. Several libraries and museums have purchased the film and are arranging programs open to the public. The documentary will air on NH Public Television again this July before the Fair.



Attendees enjoyed a barbecue meal

Many nonprofits are struggling in this present economy and Susie is working hard to keep the League moving forward in a strong position. Other topics discussed were plans for the new website and the health of the retail galleries in future decisions. All attendees received a copy of the League's annual report. ■

## North Country Studio Workshops Announces Winter Programs

**North Country Studio Workshops (NCSW)**, an educational and professional development program for accomplished artists and craftspeople, will offer thirteen advanced studio workshops at Bennington College, VT from January 28 through February 1, 2009. NCSW has served the creative community of New Hampshire and Northern New England since 1990. Held every other year, the workshops provide an affordable, high quality art education experience for established and emerging artists and craftspeople. Participants gather at Bennington College in Vermont for four days to learn from nationally acclaimed faculty and to network with their peers. "Taking the time to stretch and grow ... this is what it's all about", says League potter and NCSW planning committee member, **Sarah Burns** (New Durham, NH), when describing her experience at NCSW. "What makes our workshops unique are the



(R) Jon Brooks, wood workshop instructor, with a student.

Photo by Blake Gardner

strength of the faculty and the experience of the participants," says **Kathy Hanson** (Deerfield, NH), League juried member and NCSW executive director. League jeweler, sculptor and teacher, **Kerstin Nichols** (Hartford, VT), says of the event, "Here you

hit the ground running on a very high level. That's because the participants are very committed artists/craftspeople."

Nationally recognized faculty from across the United States will present the 2009 workshops including 2-D Design with **Ilze Aviks**, Basketry with **Lindsay Ketterer Gates**, Book Arts with **Suzanne Moore**, Color Theory with **Maggie Maggio**, Clay with **Virginia Scotchie**, Clay with **Julia Galloway**, Drawing Intensive with **Larry Thomas**, Felting with **Lisa Klakulak**, Metal Jewelry with **Andy Cooperman**, Printmaking with **Catherine Kernan**, Quilting with **Bob Adams**, Sculpture with **Patrick Dougherty** and Wood with **Merryll Saylan**. For information and to register, visit [www.northcountrystudioworkshops.org](http://www.northcountrystudioworkshops.org) or call 802-454-1298.

### Scholarships available

The League has some scholarships available to those attending NCSW. Please contact **Catherine Green**, standards and education manager, at 603-224-3375 or apply online at [www.nhcrafts.org](http://www.nhcrafts.org), click on Education. ■

## Lifetime Achievement Award Exhibition

Through recommendations, nominations, and a vote by the Board of Trustees, the League of NH Craftsmen honors extraordinary craftspeople with a Lifetime Achievement Award. Past recipients are **Gerry Williams**, **Elizabeth Nutt**, **Gordon Keeler**, and **Mary Osgood**.

In 2007, **Otto and Vivika Heino** and **Edwin and Mary Scheier** received the award and an exhibition is being planned to showcase their work and honor their remarkable achievements. The exhibition will be held May 15, 2009 through August 14, 2009.

The League's Gallery 205 committee is seeking examples of the work of these master level craftspeople from our broader community. If you have a piece of their work, please consider loaning it to support the exhibition. If you are interested, please contact **Catherine Green** at 603-224-3375 or [cgreen@nhcrafts.org](mailto:cgreen@nhcrafts.org). You will be asked to provide a photograph and dimensions of the piece, so that we ensure there are no duplicate pieces in the exhibition. Certificates of Appreciation will be given to those who have loaned their pieces. ■

## Members' Educational Series Seminar

This fall, the League will be offering a craft education seminar presented by League juried members **Kathleen Dustin** and **Al Jaeger**. Their topics will include the finer points of jewelry construction, and achieving successful composition using the principles and elements of design. This seminar will be held November 4.

A Craft Business Seminar called How to be Proactive Today for Tomorrow's Adventures will be held on Tuesday, October 7 at Horseshoe Pond Place. Watch our website for more information on making your craft business work for you. Registration information will be mailed in September. ■

## Newly Accepted Juried Members: Spring 2008

### FIBER

**Nancy Adams**, New product, tote bags,  
Newmarket, NH

**Janet Cathey**, Felted wall hangings,  
S. Strafford, VT

**Joyce Miko**, Quilts, Goffston, NH

**Joyce Murphy-Gale**, Mittens, Sunapee, NH

**Kathleen Peters**, Felted wall hangings  
and vessels, Bedford, NH

**Lucy Rogers**, Spun wool, Lovell, ME

### METAL/NON-METAL

**Karen Eisenberg**, Jewelry, North Conway, NH

### MIXED MEDIA

**Jennifer Carson**, Dolls, Newport, NH

### CLAY

**Kathleen Draper**, Functional stoneware,  
Jaffrey, NH

**Daniel Garretson**, Functional stoneware,  
Hampton, NH

**Deborah Woods**, Functional stoneware,  
Plymouth, NH

### WOOD

**Alan Betz**, Terrariums, W. Chesterfield, NH

**Ira Frost and Shane Emery**, Carved  
wood partnership, Contoocook, NH

**Noriko Isogai**, Carving, Putney, VT

**Myrl Phelps**, Danbury, NH, Cutting  
boards, boxes, furniture



*Edwin and Mary Scheier*

## IN MEMORIAM

**Edwin Scheier**, potter, passed away April 20, 2008 at the age of 97 in Green Valley, AZ. Ed began his interest in craft and ceramics through apprenticeships in New York with Peter Mueller-Monk, one of the best known art deco designers in the US, and with Austrian ceramist Valerie Wieselthier. As coordinator of the Big Stone Gap federal art galleries in Virginia, he met and married **Mary Goldsmith**, who became his artistic partner. **David Campbell**, director of the League of NH Arts and Crafts, met the Scheiers at a conference in North Carolina and asked Ed to teach ceramics at the University of New Hampshire, which he did from 1940 to 1968. When Ed retired in 1968, he and Mary moved to Oaxaca, Mexico, and

he began to design weavings and create painted and carved wood sculptures. Ed returned to pottery in 1978 after settling in Green Valley. The Scheiers received many honors including Honorary Fellows of the American Craft Council, Honorary Members of the National Council for Education in Ceramic Arts, the Pettee Medal at UNH and the Lifetime Achievement Award from the League of NH Craftsmen. A documentary about their lives, *Four Hands, One Heart*, was produced by Ken Browne in 1999.

**Fred Eden**, husband of juried member **Eleanora Eden** of Bellows Falls, VT died suddenly on April 20 after a brief illness. A memorial service was held May 11. ■

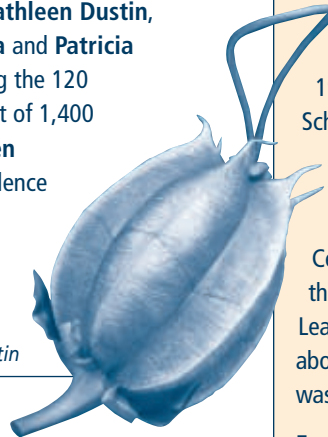
## Milestones and Achievements

**Walker Weed**, a League member since 1948, has been an influence for generations as a teacher and as an artist, having served as director of the crafts program at Dartmouth College from 1964 to 1981 and as a noted furniture maker. Walker was recently named a recipient of the prestigious Award of Distinction from The Furniture Society, a non-profit organization whose mission is to advance the art of furniture making. The Award of Distinction recognizes lifetime achievement in the studio furniture arts. Walker received the award at the Furniture Society Conference at Purchase College in Purchase, NY on June 20.

The Society of Arts & Crafts presented **Tim Christensen** with Best in Show at Craft Boston (held in March).

Three League juried members participated in the Smithsonian Craft Show in April held at the National Building Museum in Washington, DC. **Kathleen Dustin**, **Hideaki Miyamura** and **Patricia Palson** were among the 120 craftsmen juried out of 1,400 applicants. **Kathleen** received the "Excellence in Design of the Future" award. ■

*Purse by Kathleen Dustin*



## League Jurors: Mark your calendars!

The Standards Committee is hosting a Juror's Workshop for all current League jurors on Tuesday, October 21, 2008. This is an opportunity to come together, share ideas, strategies, and advice. The day will include presentations and a question-and-answer period. The new Juror Handbook, designed to make the jury process consistent and more successful, will be distributed and discussed. Details will be sent to all jurors. ■

# Birthday Bash celebrating the 75<sup>th</sup> Craftsmen's Fair!

**T**he Annual Craftsmen's Fair has traditionally been fun and festive, and this year we are kicking it up a notch to celebrate our milestone birthday! We are having a Birthday Bash on Thursday night of the Fair (August 7), and blues and folk singer Tom Rush is performing. The evening will begin with a Craftsmen's dinner and awards will be presented to juried members of the League for booth design excellence and education, and to individuals who have made significant contributions to the Fair and the League. The evening will be topped off with a vibrant fireworks display by Atlas PyroVision Productions.

## BIRTHDAY BASH TICKET INFORMATION

**Boothholders:** The Craftsmen's dinner is free for all booth holders, but you will need to pick up a ticket at the Fair Office on the fairgrounds. The cost for the concert and fireworks for booth holders is \$10, which can be purchased at the Fair Office.

**League members (juried and supporting) and booth holder guests:** Discounted Birthday Bash tickets for the Craftsmen's Dinner, Tom Rush concert, and fireworks are available at League headquarters. Cost of the dinner is \$10 and a ticket to the concert/fireworks is \$20. To get your tickets early, order by credit card from our website at [www.nhcrafts.org](http://www.nhcrafts.org) (click on *Purchase Tickets*, then click on *Verify Membership*). Members may also purchase all tickets at any gate.

## Fuel Up at the Fair Promotion

With the national average cost per gallon of gasoline now over \$4.00 (at the time of this printing), the League has come up with a promotion to provide some relief. The first 250 people who attend the Fair, Monday through Friday, who bring a gas receipt to the Sunapee Chamber of Commerce booth at the Fair will be automatically entered to win a \$50 gas card and other prizes, including gift certificates from Sunapee Region restaurants and other businesses. There is one entry per family, and contact information must be provided. There will be a drawing for the gas card and other prizes at noon each day. ■



### FAIR TICKETS NOW AVAILABLE ONLINE!

You can now purchase tickets to the Fair, and Birthday Bash dinner and Tom Rush concert online.

Go to [www.nhcrafts.org](http://www.nhcrafts.org) and click on Annual Craftsmen's Fair.



Serigraph by William Mitchell

## Limited Edition 75<sup>th</sup> Craftsmen's Fair Serigraph and Poster

To commemorate the Annual Craftsmen's Fair's 75<sup>th</sup> birthday, limited edition serigraphs and posters, created by juried League member and printmaker **William Mitchell**, will be available for sale during the Fair and on our website at [www.nhcrafts.org](http://www.nhcrafts.org) (click on *Annual Craftsmen's Fair*, then *Special Events*). This unique print is Mitchell's interpretation of the Annual Craftsmen's Fair craft tents set in the natural beauty of Mount Sunapee Resort. The Limited Edition Serigraph Print is \$150, plus \$20 shipping and handling per print. The poster is \$10, plus \$12 shipping and handling. ■

### HAVE YOUR WORK PHOTOGRAPHED

Charley Freiberg, a League and Fair photographer, will be available to shoot your work the last two weeks of July at the same rates as he charges at the Fair. Contact Charley at 603-526-2767 or [charleyfreiberg@tds.net](mailto:charleyfreiberg@tds.net) for more information or to schedule an appointment.



## Preview Party Planned for August 1

Invited guests will get a first look at the 75<sup>th</sup> Annual League of NH Craftsmen's Fair *Living With Craft*, *CraftWear* and *Sculpture Garden* exhibitions as well as *The Shop at the Fair* during the Fair Preview Party, Friday, August 1 from 5:30 pm to 7:30 pm. Mount Sunapee Culinary Services will serve mouth-watering hors d'oeuvres and refreshments and music by **Gary Robinson** will enhance the evening. An awards presentation will highlight the exemplary work of the craftspeople in these three exhibitions. Thanks to **Bev Wolf**, the Preview Party coordinator, for organizing this event.

Tickets to the Preview Party are \$50 per person, which includes one complimentary pass to the Fair. For juried members of the League, tickets are \$25. Please RSVP to League headquarters by July 25. Proceeds from the Preview Party will benefit the League's scholarship and educational enhancement grant programs. For more information about the Preview Party, please contact League headquarters at 603-224-3375.

Many thanks to our Preview Party sponsors: Lake Sunapee Bank, Morgan Press, North Country Smokehouse, Mount Sunapee Resort, and The Sheri Ensign Family Trust. ■

## Thanks to the Fair Sponsors

The League is grateful to the following businesses and individuals who have committed their support through financial sponsorships, in-kind services, or donated product to the League for the Annual Craftsmen's Fair:

Accent Magazine	G L M – dmg world media business	New Hampshire Master Gardeners
Polly Allen	Judith V. Goodnow & Michael Bujnowski	New London Hospital
American Style Magazine	Grappone Toyota	North Country Smokehouse
Atlas PyroVision Productions	Green Mountain Coffee	Papergraphics
E. Tin Bacon, Lead Individual Sponsor	Edith L. Grodin	James Russell
The Balsams Resort	Hannaford Supermarket	Secure Planning, Inc.
Jeff Brown	Laconia Savings Bank	Spring Ledge Farm
C.S. Rowe, LLC	Lake Sunapee Bank	Sugar River Bank
Cabot Creamery	LaValley Building Supply	Sullivan Creative
Comcast, Lead Media Sponsor	Mascoma Savings Bank	Sunapee Harbor Cottages
Deck Dock Home & Garden	Mount Sunapee Resort	Sunflower Gardens
Dorr Mill Store	Morgan Press	Vermont Ceramic Supply Co.
Echo Communications	Tim and Diane Mueller	Warner House
The Sheri Ensign Family Trust	New England Home Magazine	WMUR-TV
	NewHampshire.Com	Bev and Dan Wolf
	New Hampshire Magazine	Yankee Magazine

*This list was complete at time of publication. We regret any omissions of additional supporters.*

The League has many sponsorship opportunities for businesses and individuals. If you know of a potential sponsor for the League's many programs, please contact **Susie Lowe-Stockwell** at 603-224-3375 or [slowstoc@nhcrafts.org](mailto:slowstoc@nhcrafts.org).

## A Special Thanks

Thank you to all of the people who have been working throughout the year to make the Fair a success: **Terri Wiltse**, operations manager, and the Fair Committee, which consists of: **Tin Bacon, Jeff Brown, Lance Cloutier, Lorraine Dilmore, Donna Hiromura, Barbara McLaughlin, Carrie Cahill Mulligan, Pat Palson, Susanne Rowe, Luann Udell** and **Paulette Werger**; **Eric Danielson**, electrician; **Wende Shoer Lonergan**, coordinator of *Living With Craft* and the *Sculpture Garden* exhibitions; **Corinne Kennett**, coordinator of the *CraftWear* Exhibition; **Joy Raskin**, exhibition designer for *CraftWear*; **Alice LaPorte**, exhibition designer for *Living With Craft*; **Sue Babine**, administrator of *The Shop at the Fair*; **Janett Gilman, Sussy-Rose Shields**, co-managers of *The Shop at the Fair*; **Bruce Holmes**, setup coordinator of *The Shop at the Fair*; **Donna Teruko Hiromura**, coordinator of *The Next Generation*; **Sullivan Creative**, our marketing and PR consultant; **Bill and Betty Oberg**, coordinators of our volunteers; **Bev Wolf**, coordinator of the Preview Party; and **Mark Crawford**, coordinator of the Mount Sunapee Resort on-site crew. And a sincere thanks to **Jay Gamble, Tim and Diane Mueller** and everyone at the Mount Sunapee Resort! ■

## This Year's Highlights



(L) Ethan Hamby instructs a student at the Fair.

The 75th Annual Craftsmen's Fair continues its tradition of offering a variety of educational programs for all ages, including demonstrations and workshops given by juried members of the League of NH Craftsmen, as well as invited guests from the New Hampshire Potters Guild, the Guild of New Hampshire Woodworkers, the New

Hampshire Woodcarvers Guild, the New Hampshire Art Association, the New Hampshire Shaker Museum, the Canterbury Shaker Village, and the New Hampshire Farm Museum. There will also be a personalized glassmaking workshop for up to two people, taught by juried member **Harry Besett**.

Please note that there are fees for all materials for the teen/adult workshops. You may pre-register online at [www.nhcrafts.org](http://www.nhcrafts.org), and click on Annual Craftsmen's Fair. Pre-registration for adult workshops includes complimentary admission to the Fair if received by July 25.

Fairgoers will have an opportunity to learn more about how a particular craft is made by taking a Tour with a Master, a free 30-minute tour of the craft booths and exhibitions led by a master craftsman or craft collector, and about collecting fine craft during a seminar on Friday, August 8. There will also be regular screenings of the documentary on the League's 75 year history: *A LEAGUE OF OUR OWN: New Hampshire and the American Craft Movement*. ■

## Volunteers Needed!

Dozens of volunteers are needed at the Fair to help the craftspeople monitor their booths, hand out surveys to fairgoers, distribute daily bulletins to the craftspeople, and assist with the children's workshops. *Half-day volunteers* receive a name badge for free admission on the day they volunteer and a pass to attend the Fair on another day for free. *Full-day volunteers* receive the same benefits and a Fair t-shirt. If you are interested, please contact the League's Fair volunteer coordinators, **Bill and Betty Oberg**, at 603-763-4814 or call **Terri Wiltse** at League headquarters at 603-224-3375. ■

## TICKETS INFORMATION

Purchase tickets from our website at [www.nhcrafts.org](http://www.nhcrafts.org)

- **General admission** to the Fair, which includes a second-day return, is \$10 for adults, \$8 for seniors; children 12 and under are free.
- **Group Discounts:** Groups of 20 or more pay only \$8.
- **Supporting and Juried League Members:** Receive a FREE\* ticket to the admission any day of the Fair with current League membership card. \*Number of free tickets depends on membership level
- **Advanced discount** (\$2 off) tickets are available at the Lake Sunapee Chamber of Commerce at 338 Main Street in New London.

## DAILY DEMONSTRATIONS AND WORKSHOPS

**Sticks and Stones Outdoor Sculpture Building Workshop** – Mark Ragonese at 11 am and 2 pm (no fee)

**Soap Carving Workshop** – Tom Worcester at 1 pm (no fee)

**Pottery at the Fair Workshop** – NH Potters Guild, every half hour (fee)

**Chainsaw Carving** – Tom Worcester, all day

**Blacksmithing** – Garry Kalajian, all day

**Silk Painting** – Betty Lathrop

**Weaving** – Hillary Hutton and Erica Pfister

**Woodturning** – Scott Ruesswick and Bob Coleman

**Wood** – John Ryan

**Calligraphy and Paper Making** – Adele Sanborn

**Raku-fired Pottery** – Richard Foye

**Kiln-formed Glass** – Judith Copeland

**Basket Weaving** – Ruth Boland

**Tapestry Weaving** – Sarah Warren

**Glass Blowing** – Harry Besett, workshops at 10:30 am and 4 pm (fee), and demonstrations all day

**Woodworking** – Guild of NH Woodworkers, Granite State Woodcarvers, Granite State Woodturners, all day

**NH Art Association** – Printmaking, oil painting, watercolors, acrylic

**NH Craft Guilds** – Bead Society of NH, NH Polymer Clay Guild, NH Spinners & Dyers, Soonipi Quilters Guild, Northeast Basketmakers, White Mountain Woolen Magic, Dorr Mill Fiber Guild, Monadnock Knitters Guild, NH Weavers Guild, Embroiderer's Guild of America, NH Chapter, Bedford Friendship Quilt Guild, all day



Printmaking demonstration by Matt Brown

## FAIR EDUCATIONAL PROGRAM SCHEDULE

### DAILY SCHEDULE

#### SATURDAY, AUGUST 2

**Tree Stars** – Alice Ogden, 10:30 am, 11:45 am, 2 pm, 3:15 pm, children's workshop

**Rug Braiding** – Barbara Fisher, all day

#### SUNDAY, AUGUST 3

**Wood Carving Inset Letters** – Grant Taylor, 10:30 am, 11:45 am, 2 pm, 3:15 pm, teen/adult workshop

**Woodcarving** – Sumner Misenheimer, all day

#### MONDAY, AUGUST 4

**Pinched Pottery, Exploring the Textures of Mount Sunapee** – Ethan Hamby, 10:30 am, 11:45 am, 2 pm, 3:15 pm, all-ages workshop

**Quilting** – Cathy Harvey, all day

#### TUESDAY, AUGUST 5

**Pinched Pottery, Exploring the Textures of Mount Sunapee** – Ethan Hamby, 10:30 am, 11:45 am, 2 pm, 3:15 pm, all-ages workshop

**Smocking** – Beth Lux, all day

#### WEDNESDAY, AUGUST 6

**Tapestry Weaving/Painting with Wool** – Marcy Schepker, 10:30 am, 11:45 am, 2 pm, 3:15 pm, all-ages workshop

**Pottery** – Ethan Hamby, all day

#### THURSDAY, AUGUST 7

**Tapestry Weaving/Painting with Wool** – Marcy Schepker, 10:30 am, 11:45 am, 2 pm, 3:15 pm, teen/adult workshop

**Fine Sewing** – Beth Lux, all day

#### FRIDAY, AUGUST 8

**Tree Stars** – Alice Ogden, 10:30 am, 11:45 am, 2 pm, 3:15 pm, children's workshop

**Weaving** – Marcy Schepker, all day

**Beading and Embroidery** – Marie Wiggins

#### SATURDAY, AUGUST 9

**Introduction to Handmade Paper** – Angie Follensbee-Hall, 10:30 am, 11:45 am, 2 pm, 3:15 pm, all-ages workshop

**Rug Braiding** – Sandy Luckury, all day

**Woodcarving** – William Schnute, all day

#### SUNDAY, AUGUST 10

**Fantastic Fishes and Denizens of the Deep** – Liz Fletcher, 10:30 am, 11:45 am, 2 pm, 3:15 pm, all-ages workshop

**Knitting** – Ann Olson, all day

**Crocheting** – Janett Gilman, all day

### Seminar: The Art of Collecting Fine Craft

Listen, learn and talk with a panel of avid collectors of fine craft on Friday, August 8 from Noon to 1 pm in the Performing Arts Tent. Moderated by **Mary McLaughlin**, arts advocate, collector and vice president of TD Banknorth, the panel will discuss what to look for in a collection, how to get started and the value both financially and personally that collecting brings to your life. The panelists include **Brooke Adler**, **Ben Shore** and **Joanne Wise**.

### MUSICAL PERFORMANCE SCHEDULE

**ALL PERFORMANCES ARE IN THE PERFORMING ARTS TENT AT 11 AM, 1 PM, AND 3PM.**

#### SATURDAY, AUGUST 2

**Jolly Rogues** – 18th and 19th Century music

#### SUNDAY, AUGUST 3

**Amoskeag Strummers** – Patriotic numbers, classical rags, Broadway tunes and Dixieland jazz

#### MONDAY, AUGUST 4

**Late Night Radio** – Bluegrass, western swing and originals

#### TUESDAY, AUGUST 5

**Swing a Cat** – 20s and 30s swing, and three-part harmony vocals

#### WEDNESDAY, AUGUST 6

**Putnam-Pirozzoli** – Classical guitar with the earthy soul of steel string acoustic

#### THURSDAY, AUGUST 7

**Bradford Bog People** – Southern Appalachian music and beautiful ballads

#### FRIDAY, AUGUST 8

**Castlebay** – Traditional nautical them with vocals and Celtic instruments

#### SATURDAY, AUGUST 9

**Mamadou** – Music based on authentic African rhythms and arrangements

#### SUNDAY, AUGUST 10

**The Buskers** – Kinetic fusion of acoustic folk/pop, New Orleans-influenced R&B, old jazz standards, and original music

### EXHIBITIONS (ALL 9 DAYS)

#### *Living With Craft*

Room vignettes furnished entirely with handmade craft

#### *Sculpture Garden*

Outdoor sculpture and garden accessories

#### *CraftWear*

Art-to-wear clothing, jewelry, and accessories for men, women and children

#### *New Hampshire Art Association (NHAA)*

Fine art by NHAA members.

Print exhibition entitled **Sign Posts** by League and NHAA members

### FREE TOURS (ALL 9 DAYS)

#### **Tour With A Master**

**10:30 am and 3:30 pm**

Tour with a Master provides fairgoers with an in-depth view of how a particular craft is made. A League member will take fairgoers on a 30-minute tour of the craft booths and exhibitions, providing detailed commentary on the techniques and artistry that go into making that craft. Some of the scheduled tours will cover printmaking, wood turning and other woodworking techniques, pottery, glassmaking, stitchery, and metal objects and jewelry. Tours will be held 10:30 am and 3:30 pm each day. Check the Annual Craftsmen's Fair section of our website [www.nhcrafts.org](http://www.nhcrafts.org), under Special Events, for an up-to-date list.

**CENTER SANDWICH**

Sandwich Home Industries  
32 Main Street  
Center Sandwich, NH 03227  
Phone: 603-284-6831  
Fax: 603-284-7312  
Email: [sandwich\\_homeindustries@yahoo.com](mailto:sandwich_homeindustries@yahoo.com)  
Manager: Julie Deak

**CONCORD**

36 North Main Street  
Concord, NH 03301  
Phone/Fax: 603-228-8171  
Email: [leaguearts@verizon.net](mailto:leaguearts@verizon.net)  
Manager: Janine Lep

**HANOVER**

13 Lebanon Street  
Hanover, NH 03755  
Phone/Fax: 603-643-5050  
Email: [hanleague@valley.net](mailto:hanleague@valley.net)  
Manager: Tamara Renzo

**LITTLETON**

81 Main Street  
Littleton, NH 03561  
Phone: 603-444-1099  
Fax: 603-444-1098  
Email: [littletoncrafts@verizon.net](mailto:littletoncrafts@verizon.net)  
Owner: Jeff Wheeler  
Managers: Michele Allison and Beth Simon

**MEREDITH**

279 Daniel Webster Highway  
Meredith, NH 03253  
Phone: 603-279-7920  
Fax: 603-279-1073  
Email: [nhcraft@worldpath.net](mailto:nhcraft@worldpath.net)  
Manager: Nancy Hunter-Rowley

**NORTH CONWAY**

2526 White Mountain Highway  
North Conway, NH 03860  
Phone: 603-356-2441  
Fax: 603-356-2652  
Email: [nhleague@earthandfirestudio.net](mailto:nhleague@earthandfirestudio.net)  
Owners: Philip and Karissa Jacobs  
Manager: Karissa Jacobs

**WOLFEBORO**

15 North Main Street  
Wolfeboro, NH 03896  
Phone: 603-569-3309  
Email: [winterharborfarm@aol.com](mailto:winterharborfarm@aol.com)  
Manager: Sarah Coplestone

**Meredith Retail Gallery**

Potter **Steven Zoldac** and his work, *Beginnings of a New Tradition*, will be featured during the month of July.

We are currently looking for craft education instructors. If you are willing to teach please contact us at 603-279-7920. ■

**Sandwich Retail Gallery**

**Joyce Lund Brown**, the manager of the Sandwich Retail Gallery, sends this message: "As I retire from the Sandwich Home Industries, I would like to thank everyone at League Headquarters for their friendship and support. I've enjoyed working with the other gallery managers, and especially with all the wonderful artisans—a bittersweet thank you to all. See you at Sunapee." The League staff, gallery managers, and juried members congratulate Joyce on her retirement and recent marriage. Welcome to acting manager **Julie Deak** and staff at the Sandwich gallery as they enter their summer season. ■

**Littleton Retail Gallery**

The Littleton Retail Gallery will be opening a studio space for pottery and jewelry classes. Renovation of a 1,400-square-foot riverfront space behind the store is now underway. Jewelry classes will be offered beginning in the late summer, and ceramics classes, will begin in early fall. The project is receiving financial support from the League of NH Craftsmen, the NH Charitable Trust, the NH Potters Guild, and individual donors. We welcome donations for this new not-for-profit education facility bringing fine craft education to the North Country.

The Littleton Gallery hosted a Mother's Day Tea Party on May 10, featuring an exhibition of League members' teapots, teacups, tea bowls and tea accessories. Visitors were offered a delicious assortment of teas, homemade tea sandwiches and cookies, all served with china cups and lace tablecloths. While nibbling on cucumber sandwiches, guests admired a range of beautiful tea wares, including complete tea sets by **Al Jaeger** and **David Orser**, wood-fired tea bowls by **Jeff Brown**, a meticulously carved teapot by **Sarah Heimann**, and a burnished pewter tea box by **Paulette Werger**. We thank all the potters who contributed work on short notice – it was a festive celebration for all! ■

**Concord Retail Gallery**

The Council of the Concord Arts and Crafts has named **Janine Lep** as the current acting manager of the retail gallery. Management changes in May were necessary and the gallery is looking forward to a bright future. ■

**Save the Date!****NH OPEN DOORS****Veterans' Day weekend – November 8-9, 2008**

Statewide event featuring juried members of the League, members of NH Made, and other lodging, dining, and arts and cultural organizations.

More details to come.

## ADDITIONS TO THE BETTY STEELE CRAFT LIBRARY

Thank you to **Betsy Sterling Benjamin**, League juried member in mixed media, for her donation of the following books:

*CENTERING in Pottery, Poetry, and the Person* by M.C. Richards

*The Dinner Party: A Symbol of Our Heritage* by Judy Chicago

*The Dinner Party Needlework: Embroidering Our Heritage* by Judy Chicago

*The Surface Designer's Art, Introduction* by Katherine Westphal

Thank you The New Hampshire Weavers Guild for thier donation of *STEP-BY-STEP Weaving* by Nell Znamierowski.

Thank you to **Tanya Cherepova**, League juried member in metal for her donation of the following books:

*Art Forms and Civic Life in the Late Roman Empire* by H.P. L'Orange

*Plastics as an Art Form* by Thelma R. Newman

*The Art & Craft of Handmade Paper* by Vance Studley

*The Gem Hunter's Handbook* by Tim Lutz

*The House on the Klong, Asian Art Collection* by William Warren & Brian Brake

*Things to Make with Leather, A Sunset Book*

## Save the Date!

75TH ANNUAL LEAGUE OF NH  
CRAFTSMEN'S FAIR  
August 2-10, 2008

## High School Senior Receives Craft Education Scholarship

On June 3, the League presented **Meredith Ashley Joyce** (Hollis, NH), a recent graduate of Cushing Academy, with the \$1,000 Craft Education Scholarship. Meredith will be studying metalsmithing and pursuing a Bachelor of Fine Arts degree at Miami University in Oxford, OH. This past spring, eight graduating seniors applied for the scholarship, which is awarded based on the student's desire to pursue a craft-related study at the undergraduate level. Although only one student may receive the \$1,000 scholarship, scholarships of lesser amounts were awarded to five of the remaining seven seniors.

In addition to the NH High School Senior Craft Scholarship, League scholarships are available to anyone living in New Hampshire or within ten miles of its border. The Education Committee is interested in supporting intensive educational activities that present creative approaches to learning such as workshops, courses, seminars, or other activities. The application process is competitive and ongoing. For information

about a scholarship or to obtain an application call League Standards and Education Manager **Catherine Green** at 603-224-3375 or email at [cgreen@nhcrafts.org](mailto:cgreen@nhcrafts.org). ■

### CRAFT EDUCATION SCHOLARSHIPS AVAILABLE

The League offers over \$5,000 annually to individuals pursuing craft-related study through its general Craft Education Scholarship Fund and through the Vivika and Otto Heino Craft Education Scholarship Fund. Applications are reviewed on a monthly basis by the Scholarship Committee. For more information or to obtain an application see our website at [www.nhcrafts.org](http://www.nhcrafts.org), and click on Education, or contact **Catherine Green**, standards and education manager at [cgreen@nhcrafts.org](mailto:cgreen@nhcrafts.org) or call 603-224-3375.

## LERF AND CERF can really help!

The League Emergency Relief Fund was established to assist eligible craftspeople who have suffered from a disaster that significantly interrupts or prevents them from making their craft and living, and for whom said disaster creates an emergency situation and need for immediate relief funds. The craftspeople must be a permanent resident of the United States. For more information or to obtain an application, please contact **Susie Lowe-Stockwell**, executive director, at 603-224-3375 or email at [slowstoc@nhcrafts.org](mailto:slowstoc@nhcrafts.org).

The Craft Emergency Relief Fund is a national nonprofit organization dedicated to strengthening and sustaining the careers of crafts artists across the United States through disaster assistance. For information call 802-229-2306, visit [www.craftemergency.org](http://www.craftemergency.org), or email [info@craftemergency.org](mailto:info@craftemergency.org). ■

## Red River Theatre to Screen League Documentary

Red River Theatre, Concord's new movie house, will show the documentary film, *A LEAGUE OF OUR OWN: New Hampshire and the American Craft Movement*, on Thursday, July 24. A reception, film showing, and panel discussion with our executive director, **Susie Lowe-Stockwell** and juried members **Jane Balshaw**, and **Peter Bloch** will begin at 6:30 pm.

The Red River Theatre will feature a display of historical League memorabilia in its lobby gallery throughout July. Watch our website, [www.nhcrafts.org](http://www.nhcrafts.org), for more details. ■



Necklace by Christiane Tauroney



*League of N.H. Craftsmen*

League of NH Craftsmen  
205 North Main Street  
Concord, NH 03301

NON-PROFIT ORG  
US POSTAGE  
**PAID**  
CONCORD, NH  
PERMIT NO. 551

## EXHIBITION SCHEDULE

### GALLERY 205

#### 2008-09 Exhibitions

##### The Permanent Collection: 75 Gifts for 75 Years

Continues through August 13  
A multi-media exhibition featuring newly acquired pieces for the Permanent Collection in celebration of our 75<sup>th</sup> anniversary.

##### Through the Looking Glass

September 12 – December 12  
An exhibition featuring the beauty, function, and magic of glass.

##### Garden Imagery

February 6 – April 24, 2009  
A multi-media exhibition featuring the spirit and life of the garden through four seasons.



*Duck by Will Gosslein*

##### OPEN

Monday – Friday,  
8:30 am – 4:30 pm

Saturday, 10:00 am – 4:00 pm  
during exhibitions

205 North Main Street,  
Concord, NH

### 2008 RETAIL GALLERY TRAVELING EXHIBITION

#### Intimate Details and Continuing Conversations

by Kerstin Nichols

Kerstin, who is juried in metal, creates unique jewelry and sculptures that reflect her passion for nature and natural processes.



*Kerstin Nichols*

##### ON DISPLAY AT EACH OF THE LEAGUE'S RETAIL GALLERIES:

- July: Center Sandwich
- August: Wolfeboro
- September: Meredith
- October: North Conway
- November: Concord
- December: Littleton



The League of NH Craftsmen is supported in part by a grant from the New Hampshire State Council on the Arts and the National Endowment for the Arts.

For updated information about Gallery 205, our Retail Galleries, the Annual League of NH Craftsmen's Fair, or our other programs, please visit [www.nhcrafts.org](http://www.nhcrafts.org).