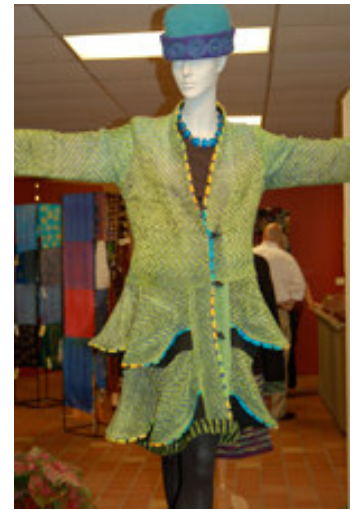


NEWS RELEASE
FOR IMMEDIATE RELEASE: July 2010

CONTACT: Carol Fusaro
P: 617-597-0072 E: carol@sullivancreative.com

Three Exhibitions Showcase Everyday Use of Fine Craft at the 77th Annual League of NH Craftsmen's Fair



CONCORD, NH – The 77th Annual League of NH Craftsmen's Fair at Mount Sunapee Resort in Newbury, NH, August 7-15, is the place to see, learn about, and purchase fine craft. The fine craft pieces that are on display are beautiful, one-of-a-kind pieces that have a function in our everyday lives. Three exhibitions at the Annual NH Craftsmen's Fair – *Living With Craft*, *CraftWear*, and the outdoor *Sculpture Garden* – demonstrate how handcrafted furnishings, sculptures, and clothing and accessories are used in the home and garden and as wearable art. Mount Sunapee's Spruce Lodge is the location for the *Living With Craft* and *CraftWear* exhibitions. The outdoor *Sculpture Garden* is located by the Sunapee Lodge.

Awards for outstanding work in each of these exhibitions are presented during the Annual Craftsmen's Fair *Preview Party* on Friday evening, August 6.

***Living With Craft* Exhibition**

The *Living With Craft* Exhibition is a professionally designed series of room vignettes furnished entirely with approximately 200 handcrafted works. Dining room, bedroom, living room, and entryway settings present creative arrangements of handcrafted furniture surrounded by functional and decorative items,

(more)

League of NH Craftsmen – Three Fair Exhibitions /2

from three-dimensional wall-hangings and hand-woven floor coverings, to sterling silver tableware, and spectacular light fixtures.

These are the awards and award sponsors for the *Living With Craft* exhibition.

Awards

Best in Show Award
Best in Traditional Design Award
E. L.Grodin Best Collaborative Award
Best in Weaving Award
Best in Two-Dimensional Design Award
Best in Ceramics Award – Functional
Best in Ceramics Award – Decorative
Best in Fiber Award
Best in Wood Award
Best in Turned/Decorative Wood
Joe Tucker Metal Award
Stevens Glass Award
Best in Baskets Award
The Gorst Print Award
Best in Photography Award
Best in Mixed Media Award
Permanent Collection Purchase Award
Public Choice Award

Award Sponsors

Corzilius, Matuszewski and Krause Architects
Merrimack County Savings Bank
Edith Grodin
NH Weavers Guild
Loring Stevens
NH Potters Guild
NH Potters Guild
Jim and Sue King - Skyview Alpacas
Guild of NH Woodworkers
Anonymous
Nora and Norman Stevens
Nora and Norman Stevens
Polly Allen
Charles and Elizabeth Gorst
David and Susan Feltus
Anonymous
Anonymous
Davis & Towle Group

***CraftWear* Exhibition**

CraftWear showcases beautiful one-of-a-kind clothing, jewelry and accessories for women and children handcrafted by juried League members. The selection in this exhibition is always impressive, with a dazzling selection of traditional and avant-garde jewelry made of gold, silver, gemstones, or polymer clay, and gorgeous silk and colorful fabric outfits, among other handcrafted wearables and decorative items.

These are the awards and the award sponsors for the *CraftWear* exhibition.

Awards

Best in Show Award
Best in Metal Jewelry Award
Best in Jewelry Award
Best in Jewelry with Stone Award
Best in Weaving Award
Dorr Mill Award
Weaving – Best Use of Color Award
Best in Fine Sewing Award
Creative Sewing Award
Harrisville Designs Weaving Award
Elegant Ewe Best in Knitting Award
Best in Clothing Award
Best in Accessories Award
Best in Mixed Media Jewelry Award

Award Sponsors

Schiffman, Paul & Dattilio, PC
Eleanor “Tin” Bacon
Gondwana and Divine Clothing Co.
Mark Knipe Goldsmiths
NH Weavers Guild
Dorr Mill Store
The Fiber Studio
Portsmouth Fabrics
Martin’s House of Cloth
Harrisville Designs
The Elegant Ewe
League of NH Craftsmen Retail Galleries
Wild Orchard Guest Farm at The Cordwainer Shop
Wild Orchard Guest Farm at The Cordwainer Shop
(more)

CraftWear Awards (continued)

Best in Seed Bead Weaving
Most Creative Use of Beads
Art for All Award
NH Institute of Art Award
Public Choice Award

Award Sponsors

Bead it!
Bead Society of New Hampshire
Carol Nadeau
NH Institute of Art
League of NH Craftsmen Retail Galleries

Sculpture Garden Exhibition

The *Sculpture Garden* Exhibition showcases garden art in both sculptural and functional designs. Located just past Tent 1 and adjacent to the Garden Café at the Sunapee Lodge, the garden offers a wide variety of outdoor sculptures, furnishings, fountains, and garden accessories. The exhibition demonstrates how these beautiful pieces can be easily integrated into any garden, lawn, or open field setting. The *Sculpture Garden* will be open during the *Preview Party* on Friday, August 6, at which time the Best in Show award will be presented. The Public Choice Award will be announced on Saturday, August 14:

Award

Best in Show Award
Public Choice Award

Award Sponsors

Vahan and Anne Sarkisian
Bob and Rita Cricenti

Fair Information and Online Ticket Sales

The lead sponsor for the 77th Annual League of NH Craftsmen's Fair is the Duprey Company. The Fair will be open from 10:00 am to 5:00 pm daily, rain or shine, from August 7-15. Admission is \$10 for adults; \$8 for seniors, students, active duty military (with ID), and groups of 20 or more. Admission is free for children 12 and under. A ticket includes admission to all exhibitions and demonstrations and a second day free return to the Fair. Tickets are available for advance purchase on the League's website, www.nhcrafts.org. Having tickets in advance is a great way to avoid the long ticket lines at the gate.

Parking is free and childcare is available on site at \$2 per hour. Picnic areas, as well as a food tent, indoor cafeterias, and an outdoor Garden Café (serving adult beverages) are open daily. No pets are permitted on the fairgrounds or left in cars in the parking lots.

About the League of NH Craftsmen

The League of NH Craftsmen is a non-profit, craft education organization. Its mission is to encourage, nurture and promote the creation, use and preservation of fine contemporary and traditional craft through the inspiration and education of artists and the broader community. The League represents the *signature of excellence* in fine craft, through the work of its juried members, and its rigorous standards for self expression, vision, and quality craftsmanship.

(more)

League of NH Craftsmen – Three Fair Exhibitions /3

The League of NH Craftsmen is supported in part by a grant from the New Hampshire State Council on the Arts and the National Endowment for the Arts.



For more information about the Fair, or the League of NH Craftsmen, call 603-224-3375, email nhleague@nhcrafts.org, or visit the League's website at www.nhcrafts.org.

###